



The Timbergram

JANUARY 2018

TIMBERGROVE MANOR CIVIC CLUB ◦ PO BOX 70977 ◦ HOUSTON, TX 77270-0977

WWW.TIMBERGROVE.ORG

TMCC General Meeting

*Tuesday, January 9
7:00 PM*

Sinclair Elementary Cafeteria

Guest Speaker

*Sgt. Tracy Hicks
Houston Police Department*

*Neighborhood News
and Discussions*

Committee Reports

*Come Early
pizza + social
6:30 PM*

*Doorprize:
\$25 Gift Card to
King's BierHaus*

2018 Annual TMCC Membership Drive Kick Off

The Timbergrove Manor Civic Club is a non-profit organization charged with caring for our amazing little corner of the city by promoting civic pride, developing social welfare and establishing public unity in the community. And it's all made possible by the support of our gracious members.

Membership dues are only \$30 per voting person for a calendar year or \$60 for two voting members per household. This very affordable price is a great way to sustain Timbergrove Manor as one of the most desirable neighborhoods in Houston and is significantly less than most HOAs. So what exactly does TMCC do?

How does TMCC use your contributions?

Community Events

Annually, TMCC hosts an Easter Egg Hunt, Fourth of July Ice Cream Social, SnowFest and, new this year, a dinner party for adult residents. Hundreds of Timbergrove Manor residents attend and love these unique events which make Timbergrove Manor such a special place. We have terrific sponsors for our events and most of our organizing and staffing is done by volunteer neighbors. While this helps to offset costs, we still have plenty of additional expenses associated with beautification, neighborhood activities and improvements, maintenance projects and more.

Environmental Affairs & Civic Engagement

Our Environmental Affairs Committee is very active in the

maintenance and development of our neighborhood parks and spearheads involvement with sensitive projects like Bryce St Treatment Station. The TMCC also actively works with Super Neighborhood Council 14 and other city and county entities to ensure our neighborhood is maintained and improved.

Deed Restrictions & Design Review

We have a thoughtful and diligent Deed Restriction Committee focused on working with residents to be sure deed restrictions are understood and observed. The Committee works hand in hand with our Design Review Committee as it guides residents through remodeling or building new homes in the neighborhood. Together, they are helping us to watch over our great neighborhood.

Neighborhood Security

In addition to a legacy of support from the HPD Citizen Patrol program, in 2015 TMCC retained a private security provider, S.E.A.L. Security Solutions, to police the neighborhood with year-round patrols. This includes regular patrols and a hotline for all residents and special benefits, including vacation watch services, alarm response and home security reviews for paid security supporters.

Support TMCC Today

Learn more about TMCC and connect with us online at timbergrove.org. You can also pay dues online or send your check with the enclosed form. Want to do more? Email us at volunteer@timbergrove.org.

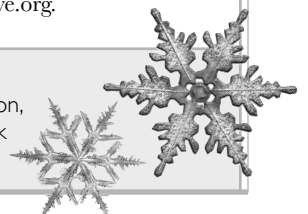
INSIDE THIS ISSUE

Missed the inaugural Taste of Timbergrove event? Look back on the fun-filled night inside these pages.



SnowFest 2017

Following a day of REAL snow in Houston, the kids of Timbergrove took to the park for our annual SnowFest extravaganza!



We've Lost a Friend

By Bill Morfey

It is with much sadness that I must report to the membership the recent loss of Timbergrove Manor resident and TMCC Board member, Lorraine Cherry. Lorraine passed away on November 25.

A long-time TMCC member, Lorraine was a Director on the TMCC Board and also was a founding member of the Lazybrook/Timbergrove SuperNeighborhood Council. Although she brought her energy and focus to all manner of neighborhood issues, her volunteer work on the Environmental Committees for both TMCC and the SuperNeighborhood Council is worthy of particular note.

Lorraine's signature achievement for Timbergrove Manor and the Houston community is the more than twenty acres of forest that have been preserved at West 11th Street Park. Starting in 1998,

Lorraine led the effort to raise funds for the City's acquisition of the property from HISD. She was a founder of the nonprofit Friends of West 11th St. Park in 2005 and served as its president. West 11th Street Park was formally established in 2007 and Lorraine worked continuously to maintain the uniqueness of the park while also adding infrastructure to allow the public to enjoy all it has to offer.

Lorraine seamlessly combined elements of leadership and service to create a legacy that will continue to enhance our neighborhood far into the future. Her tireless work for the community and her love of life in general will both be sorely missed.

Lorraine is survived by her husband of 27 years, Dave Dyer (Houston) and her brother, Jeff Kasmar (Albany, CA). Donations in her honor may be made to

Photo credit: Chris Daigle



Friends of West 11th Street Park, P.O. Box 7679, Houston, Texas 77270-7679 or through their website at www.west11thstreetpark.org.



Neighborhood Expert

kw metropolitan
KELLER WILLIAMS REALTY
MrTimbergrove.com
ALLEN FRIEZE
832.419.9969



HAPPY 2018!

Wishing you and yours Prosperity,
Good Health and Happiness in the coming year!
Buying, selling or relocating, let me help you find
that special place to call your own.

Timbergrove Manor Resident & Marketing Specialist!



Veronica Valentz
REALTOR®

713.505.5333
veronica.valentz@garygreene.com
www.veronicavalentz.com



**GARY
GREENE**

©2018 Better Homes and Gardens Real Estate LLC. Better Homes and Gardens® is a registered trademark of Meredith Corporation licensed to Better Homes and Gardens Real Estate LLC. Equal Opportunity Company. Equal Housing Opportunity. Each Franchise is Independently Owned and Operated. If your property is currently listed with a real estate broker, please disavow. It is not our intention to solicit the offerings of other real estate brokers.

Campaign to Rename West 11th Street Park

An effort is underway to rename one of Timbergrove Manor's flagship green spaces — West 11th Street Park — in honor of one of its greatest advocates, Lorraine Cherry. Lorraine's tireless work to secure and maintain the 20-acre wooded area as a natural habitat would be aptly memorialized if the City of Houston park were to bear her name.

To support this effort, please make time to sign a petition formally requesting the park be renamed to *The Lorraine Cherry Nature Preserve*. A hard copy will be available for signature January 4 - 8 on the the front porch of the Vickers-Guy residence at 6310 Pineshade Ln. and at the TMCC General Meeting January 9. Not able to sign at either of those times? Email volunteer@timbergrove.org and request more info for future signing opportunities.

Design Review Committee Update

Plan Reviews

A proposed new residence for 6122 Hurst, Section 5 has been tentatively approved and the approval letter is expected to go out the week of Dec 11.

Permits

The City of Houston has issued permits for "repairs per specifications list" (mostly Hurricane Harvey related repairs) for the following addresses:

- 6134 Hurst, Section 5
- 6215 Hurst, Section 5
- 6407 Wister, Section 6

Porta Potties in Jaycee Park

Our Jaycee Park porta potty service agreements are up for renewal and we'd love your feedback on how we should move forward. Email us today at friendsofjayceepark@timbergrove.org.

Neighborhood News

A huge TMCC welcome to all the new residents who celebrated their first NYE in the area this year with a special greeting for **Michael and Laura Bradham** on Woodbrook Ln. Michael grew up there and renovated before moving back with his family. His mother, Jean, also lives with them. Their neighbor Barbara Ramirez notes "they are a wonderful addition to the neighborhood!"

On the opposite end of the spectrum, longtime resident **Chris Ehlinger** is celebrating 27 years in Timbergrove. Wow! He is a former President and board member of TMCC and he "still believes Timbergrove Manor is the best neighborhood to live in." So do we, Chris!

Finally, congratulations to newly elected TMCC Officers and Directors Bill Morfey, Leslie Hillendal, Pete Davies, Sandra Crook, Micah Heilbrun, Crystal Neustadt and Jennifer Vickers.



GREENWOOD KING P R O P E R T I E S

a place to find your home

ALEXANDRA BERRY

Top Producer 2015

A Timbergrove resident since 2012

A Greenwood King Timbergrove expert

Sinclair family since 2013

Active Sinclair PTO member

713.480.2213 / alexberry@greenwoodking.com
1801 Heights Blvd. Houston, Texas 77008

The Taste of Timbergrove Wrap Up

Were you there? Did you come to our inaugural Timbergrove Manor Civic Club's newest annual event? It had been years in the making, an event uniquely created specifically for our adult residents and it is named The Taste of Timbergrove, a Founders Dinner.

The first time ever event was held on Saturday, October 21 at the home of Tim Louque and Gary Nordstrom. There were about eighty people who attended. It was a smashing success based on the great attendance, the fantastic comments and conversations during the party, the amazing number of entrants in our pot luck dinner contest and from the thank you notes, e-mails and social media response. It was apparent that this neighborhood night out will quickly become the annual event to attend yearly in our neighborhood.

The pot luck dinner contest was a stunning success, really. We had no idea what to expect. In the end, we had about twenty-five entries! The pot luck dinner recipe winners were Bryan Cook for his Corn Casserole, Howard and Jeanette Moon for their Chocolate Sheet Cake and Linda Leggio for her Jalapeno Squares. These were but a few of the amazing dishes sampled.

We also added a silent auction to the event. All money raised — more than \$1,500 — was donated to our Neighborhood Security Program. Nice work everyone! Our donors for the silent auction items were Rainbow Lodge, E|C Home Décor and Furniture Outlet,

Hughie's on 18th, Forever Young by Sandee, The Barking Pig, Bliss Gift and Home, Another Place in Time, Jody Morris and Michele Laprade, Annette Barry, Steve Ciapi, Sylvia Landry, Pat Sullivan Photographer. We thank them most sincerely. Our wonderful supporters, please stop by when you can and support them in any way possible.

Thank you to Eureka Heights Brewery for donating a keg of their delicious Buckle Bunny award winning beer and to Chanel Richbourg, a Timbergrove Manor resident, who is with Republic National Distributors for donating an impressive

variety of great wines. Thanks to John and Lenora Pohlman for sponsoring the cocktail for the night, Planter's Punch. And we must not forget our wonderful hosts Tim and Gary! Thank you so much guys.

And las, thank you to our official sponsors, **Jennifer Vickers of Vickers Properties at KSP (713) 240-9671** and **Chris Jones – Deuce Electrical (832) 623-6655**. Thank you for making The Taste of Timbergrove everything that we hoped it would be. Thank you.



G
 Greymark
 Construction
 Company
Design+Build/Remodel

2211 Norfolk #626
 Houston, Texas 77098
 713.722.7226 tel
 713.722.9269 fax
 832.788.0086 mobile
 sandra@greymarkconstruction.com
 greymarkconstruction.com

**OAK
 FOREST**
 VETERINARY
 HOSPITAL

**NEW CLIENTS
 RECEIVE
 10% OFF
 FIRST VISIT**

Sandra Crook
 Design Consultant



713.682.6351 • 2120 West 34th Street
OAKFORESTVET.COM

Traffic Management in The Grove

Work on the Timbergrove/Seamist Proposed Traffic Management plan continues following public meetings earlier in 2017. According to Khang M. Nguyen, Assistant Director, Traffic Management Branch, City of Houston, more than 190 comments were received on the plan, with more than 60 percent supporting speed cushion installation.

The original plan has been modified to reduce the number of cushions on east-west streets. Nguyen estimates construction will start in February. "After the cushions are in place for at least 90 days, we'll conduct an 'after' traffic study and then hold the third public meeting to present the study results and solicit further input from the residents."

To the right is the final approved plan for the testing phase. Inquiries and comments on the project can be directed to Greg at: glgilbert2003@gmail.com



- Legend
- Signal
 - Stop Sign
 - Existing Cushion
 - Proposed Cushion
 - Existing Speed Hump
 - Resident Feedback
 - Do Not Support - 68
 - Support w/ Modification - 47
 - Support - 75

NTMP# 6018-10
Timbergrove-Seamist



Support Sinclair Elementary

Doing some cleaning in the new year, please consider Sinclair for any of your gently used wares. Furniture, magazines, electronics, etc. Email us at sinclairfriends@gmail.com We pick up!



Model Home Furniture and Showroom Clearance Outlet Store

Bring this ad in to receive 10% off your next purchase.

Limited to one transaction per customer. Discount cannot be combined with any other promotions. Expires 3/31/18

Come visit our 9,000 sq. ft. showroom and choose from hundreds of different pieces of furniture, art, lamps and accessories. Our showroom and warehouse receives new product weekly.



New Hours

Open Tuesday - Saturday 9 am - 5 pm

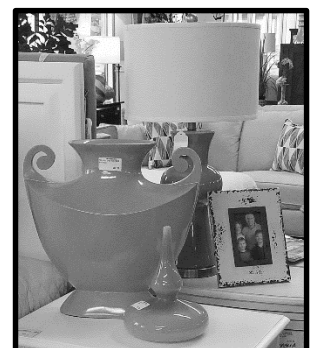
9200 Hempstead Road Suite 150

Houston, TX 77008

713-725-2405

Inventory pricing up to 70% off retail everyday.

Group Discount Program Available!



Follow us on



Memories of a Timbergrove Manor Tradition - SnowFest 2017

Everything early that morning started out perfectly and smooth, even making the nine gallons of hot chocolate that began at 2:30 AM. That also included the weather! Remember, it had just snowed the night before! Every detail lined up perfectly for our 2017 SnowFest and the festival's attendance was the highest in years. The crowd was estimated to be up to 350 people and it was an amazing success! Everyone, including our volunteers, left smiling – satisfied, happy and full of memories that will last a life time.

There were fields of fresh snow, excited children running here and there, blurs of activity dashing from bounce houses back to the snow then to the donut holes and then posing with Santa Claus, squeals and laughter, wonder and delight, faces being painted, balloon animals for all, train rides – even Milk-Bone treats for the dogs! And for the first

time at SnowFest, we had Christmas music spun by none other than our Timbergrove Manor Civic Club President and Timbergrove Manor's resident DJ, Bill Morfey. If you can just imagine your idea of the best Christmas movie ever then you know what the scene was at our neighborhood's Annual SnowFest which was held on Saturday, December 9 at Jaycee Park.

We offer our most heartfelt and sincere thanks to our generous sponsor **Carolyn Bryant with RE/MAX Metro at 281-723-9810**. Carolyn's continued support for this event over the years, has made it possible for the Civic Club to expand and improve SnowFest year after year.

I am thrilled to say that we had a record number of volunteers, which quite possibly, made it the best year yet! We actually had enough volunteers to have event GREETERS for the first time at

both main entrances to the park. That was a great touch. Thank you to the volunteers who were there giving us their time at SnowFest, working to make it all perfect ... Anna Luckenbach, Bill Morfey, Bill Perego, Brenna Galle, Candace Powell, Carolyn Bryant, Courtney Routh, Darlene Wayt, Gary Nordstrom, Greg and Sarah Carter, Hugo Coumont, Jamie Hay, Jeff Wayt, Jennifer Cameron and her friend George, Johnathan Rhoades, Katie Sunstrom, Kenny Bryant, Kerry McEniry, Kristi Kolmetz, Rachelle Melgarejo, Michele Laprade, Pete Davies, Susanna Kartye, Traci Riley and any others we may have missed.

With such a tremendous turnout of guests and volunteers, you might be wondering which direction we'll be taking things next year. That's easy. UP! We have already begun planning our 2018 event!

Special thanks to Jeff Wayt for photography.





Sharon Ettinger

— REAL ESTATE SOLUTIONS —



713.299.5149
setting@msn.com
www.sharonettinger.com



The Metropolitan
5055 Westheimer, Ste 200
Houston, TX 77056
Each office is independently owned and operated.

Michelle Ray PROPERTIES

Get award-winning service from a Timbergrove resident and top producing professional. Call today for a complimentary consultation with no obligation! Hablamos Español.

Some services offered are:

- A Complimentary Comparative Market Analysis
- Professional Pictures
- On-Site and Virtual Staging Services
- Online Marketing
- Special Timbergrove neighborhood discount, non-traditional listing options. Call for more info.

We are active in the community, proud supporter of the Timbergrove Sports Association, Jaycee Park



Michelle Treviño Ray
Broker | Owner -CNE, ABR, ASP, SFR
832.715.5819 Cell
Michelle@MichelleRayProperties.com
Texas Monthly
2013-16 Five Star Professional

Michelle Ray Properties
1333 Heights Blvd. #101
Houston, TX 77008
Office 713.518.1576
MichelleRayProperties.com



Alexandra Cajete
832.528.7625 Cell
AlexandraCajete@gmail.com

Super Neighborhood Council-14 News

By Darlene Wayt

Super Neighborhood Council 14 (SNC-14) 2018 meeting dates are February 8; April 12; June 14; August 9; October 11; and December 13. **We've changed the day and venue!** Our SNC-14 bi-monthly public meetings will be held on Thursdays at Lazybrook Baptist Church, 1822 W. 18th Street, from 6:15 p.m. – 7:45 p.m.

At our December 14 meeting, Stephen Costello, COH Chief Resilience Officer (“Flood Czar”), spoke about COH Development Regulations as they relate to flooding. He also addressed Sources of Recovery Money and Uses.

During the discussion of regulations, Costello said that he favors and will recommend a revision to Chapter 9 (Storm Water Design) of the Public Works and Engineering Department’s

Infrastructure Design Manual that would eliminate “grandfathering” which allows for exemptions and/or reductions in detention and drainage requirements for redevelopment of properties that had impervious cover in the past. Eliminating “grandfathering” would require full mitigation for all new development, including high-density development.

Mr. Costello is working with officials in Washington, D.C. to expedite HUD and FEMA funds to Houston to aid with Harvey recovery but he cautioned this is a slow, cumbersome process. In the meantime, Mr. Costello is also working with Mayor Pro Tem Cohen and Assistant Director Rod Pinheiro of the Storm Water Action Team (SWAT) Program. The SWAT initiative aims to improve localized drainage by addressing collapsed outfalls & roadside ditches and grate failures. MPT Cohen has

authorized some discretionary funds to be used for these purposes.

These are only a few highlights from the information presented by Mr. Costello. He can be reached at 832-393-0811 or stephen.costello@houstontx.gov.

The SNC-14 continues monitor the Holly Park/Timbergrove Traffic Study; the fence and foundation rebuild around the Bryce Chemical Feed Station; and the installation of odor monitoring equipment at that site.

For information about the SNC-14, visit www.snc-14.org. The positions of Vice President and chair of the Parks and Beautification Committee are vacant. If you would like to volunteer, contact Darlene Wayt, SNC-14 Correspondence Secretary at dwayt@comcast.net.

Elizabeth McCormick

Your Neighborhood Realtor®

2016 – 2017

TIMBERGROVE MANOR SALES STATISTICS



- Proud sponsor of TMCC Easter Egg Hunt
- Proud supporter of Sinclair Elementary School
- 2012-2017 Texas Monthly Five Star Agent
- 2011-2017 Top Producer
- Master Certified Negotiation Expert



Timbergrove Manor *is my home since 2000.*

Timbergrove Manor *is my business since 2006.*



ELIZABETH MCCORMICK

832.661.7300 ★ elizabethmccormickrealtor.com

	# Homes Sold	Average Price	Avg. Days On Market
--	--------------	---------------	---------------------

2016

QRT 1	12	\$518,417	99
QRT 2	18	\$479,581	73
QRT 3	24	\$474,758	71
QRT 4	13	\$458,577	68

2017

QRT 1	18	\$483,333	50
QRT 2	24	\$452,892	45
QRT 3	15	\$500,067	60
OCT.-NOV.	10	\$493,425	66



heritagetexas.com





**PAMELA
EFFERSON
PROPERTIES**

*Real Estate
Corner*

713-822-8555
BROKER ASSOCIATE • REALTOR®
Pamela@SellingHomesInHouston.com
SellingHomesInHouston.com

 **ABUNDANT
LIVING
REAL ESTATE**

Q. What should I know about owning investment property?

A. You can make a successful investment by avoiding these mistakes:

- **Being an absentee owner.** Visit the property often and talk to your tenants to get feedback. If you bought a house as a “passive” investment, you may want to hire a property management company.
- **Not having adequate insurance.** Work with an insurance professional who will see that you are covered.
- **Not charging fair rent.** A REALTOR® who is an Investor Specialist can help you decide what is reasonable for the property.
- **Selecting unreliable tenants.** Check all references and credit histories. Good renters will help you generate positive cash flow you can use to reinvest and lower the property payment.

Do you have a real estate question you want answered? Feel free to call me at 713-822-8555.

*Happy Holidays
&
Happy New Year*

Causes and Cures of Pain

From aching joints to general fatigue, sometimes we’re plagued by symptoms, but we don’t know what the medical problem could be at the root of our pain. Here are a few health issues that could be causing your problems, and a few “quick tips” that may help.

1. **Backaches** – An old mattress can cause back pain, but you may want to have your doctor check your vitamin D levels – a deficiency can cause back and joint pain. A daily supplement can help if that’s the culprit. Weakened vertebrae, muscle fatigue, and back spasms may be eased with daily stretching, yoga, and hot and cold therapy applied via heating pads and ice packs (see your doctor for help with how to use this correctly).
2. **Aching joints** – Pain sensitivity is particularly acute for women who have gone through menopause. If you eat tomatoes, eggplant, potatoes, dairy, and/or gluten, keep a food diary to see if food sensitivity is a culprit of your pain.
3. **Lethargy and fatigue** – Remaining alert and awake ensures you’re working at your highest levels of productivity. If you’re also suffering from sensitivity to cold and unexplained weight gain, hypothyroidism could be to blame. Of course, poor sleep could be at fault; get 30 minutes of aerobic exercise every day to increase levels of deep sleep.
4. **Foot pain** – Though gout affects joints throughout the body, the most common place for this painful condition to occur is the base of the big toe. Pain concentrated in the heel or arch of the foot may result from plantar fasciitis. Ditch the high heels and tight-fitting shoes, and lose excess weight to help decrease pain. Alcohol and stress can increase gout flare-ups.

For a more comprehensive list of possible hidden causes and cures of pain, try this online tool: symptomchecker.isabelhealthcare.com

Timbergrove Manor Civic Club Leadership

OFFICERS AND DIRECTORS

President	Bill Morfey	832-651-0112	president@timbergrove.org
VP	Leslie Hillendahl	281-236-6345	vp@timbergrove.org
Secretary	Peter Davies	713-861-1550	secretary@timbergrove.org
Treasurer	Sandra Crook		treasurer@timbergrove.org
Director	Carrie Brawley	832-878-1689	directorcbrawley@timbergrove.org
Director	Jamie Hay	713-882-2032	directorjhay@timbergrove.org
Director	Micah Heilbrun		directormheilbrun@timbergrove.org
Director	Crystal Neustadt	713-419-5140	directorcneustadt@timbergrove.org
Director	Jennifer Vickers	713-240-9671	directorjvickers@timbergrove.org

CHAIRPERSONS - TMCC COMMITTEES

Activities	Tim Louque		activities@timbergrove.org
Beautification	Leslie Hillendahl	281-236-6345	beautification@timbergrove.org
Block Captains	Carolyn Bryant	281-723-9810	blockcaptains@timbergrove.org
Deed Restrictions Enforcement	Traci Riley	832-303-2688	deedrestrictions@timbergrove.org
Design Review	Dana Whitney		drc@timbergrove.org
Environmental Affairs			environmentalaffairs@timbergrove.org
Friends of Jaycee Park	T. Riley/ H. Sharp	832-303-2688	deedrestrictions@timbergrove.org
Membership	Crystal Neustadt		membership@timbergrove.org
Security	Jennifer Vickers	713-240-9671	security@timbergrove.org
Timbergram	Jennifer Vickers	713-240-9671	timbergram@timbergrove.org
Timbergreeters	Carolyn Bryant	281-723-9810	timbergreeters@timbergrove.org
Web Site	Laura Speck		webmaster@timbergrove.org
Yard of the Month	Leslie Hillendahl	281-236-6345	yardofmonth@timbergrove.org

SEALS PRIVATE SECURITY HOTLINE: (832) 956-1966

2017 Holiday Lights Contest Winners

We have noticed that with every new year we welcome, we see more and more Christmas lights. And even better, we get the sense that there are some real neighborly competitions beginning to brew! It's great! From CDs strung in live oaks to a Mickey Mouse wreath hung on a magnolia, here are the 2017 Holiday Lights Contest Winners.

Next year, we will have a brand new category – "MOST DECORATED BLOCK." Now is the time to get your thoughts together with your neighbors on the block and make plans to be the winner of our newest award.

Best Original Theme

6314 Grovewood Lane

Best Traditional Theme

6427 Kury Lane

Best Religious Theme

6538 Lindyann Lane

Favorite Children's Theme

2430 Droxford Drive

Best Inflatables Display

2302 Tannehill Drive

Best Overall Use of Lights

6202 Kury Lane

Exceptional Achievement

1327 Guese Road

Sidewalk Landscaping

Submitted by Lilian Jolliffe

A reminder to Timbergrove residents; they are responsible for controlling the vegetation/plants that grow over or under property fences and eventually take control of sidewalks. The Americans with Disabilities Act protects our neighbors with disabilities and expect homeowners to control their plants; and keep them off the sidewalks. Please remember, some day you may be the one with the disability and walking is an exercise to keep your limbs from becoming "rusty."

Solid Waste Collection Schedule

Tree Waste/Junk Waste/Heavy Trash:

Due to disaster debris collection efforts, the only regularly scheduled solid waste services are regular garbage and recycling collection.. All other scheduled services – curbside, yard waste and junk/tree waste – are suspended until further notice.

Recycling - every other week:

Thursday, January 11
Thursday, January 25
Thursday, February 8
Thursday, February 22

Trash pickup — every Thursday.