

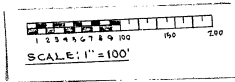
TIMBERGROVE MANOR SECTION TWELVE

A 13.844 ACRE TRACT OUT OF THE JOHN REINERMAN SURVEY, ABST. NO. 642, AND THE HENRY REINERMAN SURVEY, ABST. NO. 644, HARRIS COUNTY, TEXAS.

SCALE: 1" = 100'

DATE: MAY, 1959

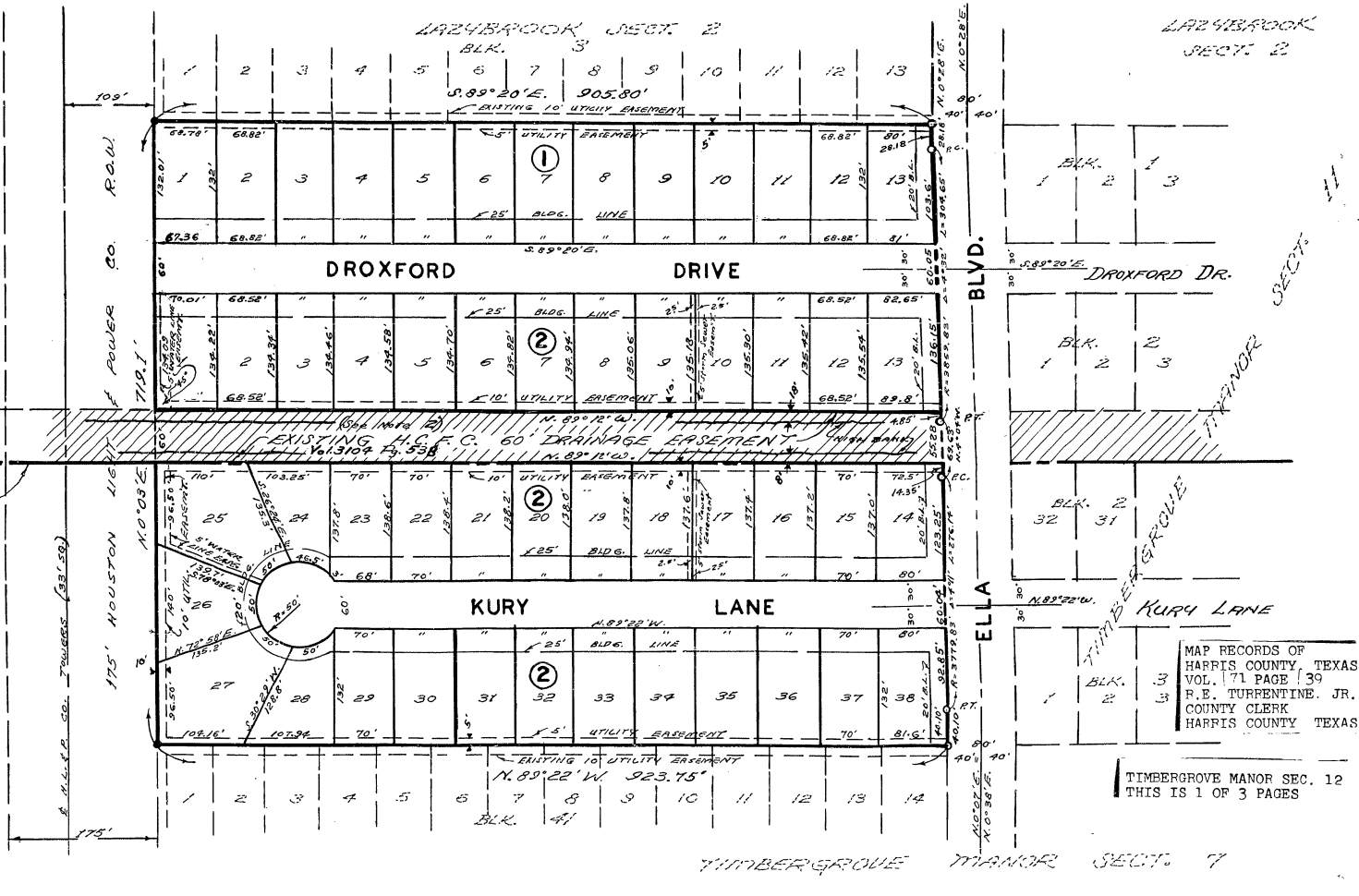
G & L ENGINEERING CO.
D.I. LLOYD OWNER
V.W. GOTTULA CO-OWNER
51 LOTS — 2 BLKS.



Note:
1. All side lot lines are either perpendicular or radial to street frontage unless otherwise noted.
2. This easement shall be kept clear of fences, building, planting, and other obstructions to the operation and maintenance of the drainage facility.

MATCH LINE
MATCH LINE

SEE PAGE 38



MAP RECORDS OF
HARRIS COUNTY TEXAS
VOL. 171 PAGE 139
P.E. TURENTINE, JR.
COUNTY CLERK
HARRIS COUNTY TEXAS

TIMBERGROVE MANOR SEC. 12
THIS IS 1 OF 3 PAGES

1. aerial
the ground
the boundaries
noted.
by Joseph L. Lloyd, its Vice Pres.,
of Houston, Tex., this 23rd day of
JUNE 1959.

2. a
Holder

3. lay person-
whose
to me that
for it.

4. of June 1959.
a (James)
ris Co., Tex.

5. a public
from
of records
and
me.)

6. by
number 383

7. vision of
vision of

8. signature
vision of

9. Harris
with its
my office
6-1960,
221-110

10. on, the day

11. TR
Texas.
NATURE
Deputy.
HANGED

12. TIMBERGROVE
MANOR
SECTION 10

13. MATCH LINE
MATCH LINE
MATCH LINE