



**TIMBERGROVE MANOR SECTION ELEVEN**  
**A 25.004 ACRE TRACT OUT OF THE JOHN REINERMAN SURVEY, ABST. NO. 642,**  
**AND THE HENRY REINERMAN SURVEY, ABST. NO. 644, HARRIS CO., TEX.**

JUNE, 1935

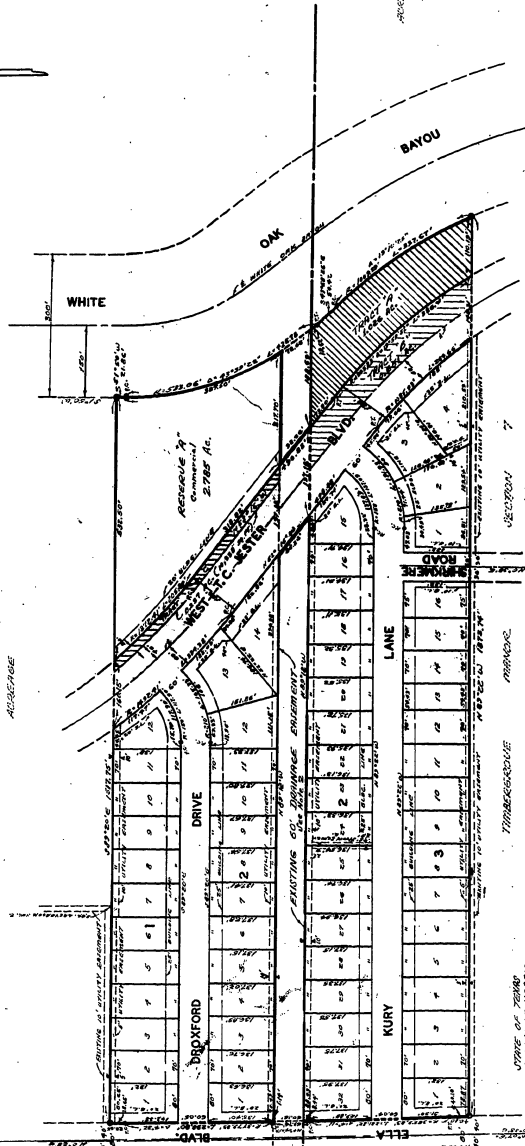
**G & L ENGINEERING CO.**  
 1100 WEST 17TH STREET  
 HOUSTON, TEXAS

47581A



*All lots and lines are within permanent or natural in  
 stream average water elevation noted.  
 Easements are shown in accordance with the provisions and  
 conditions of the drainage authority.*

Match Line



COUNTY OF TEXAS  
 COUNTY OF HARRIS

I, **W. B. Miller**, Surveyor, do hereby certify that the above plat was prepared from the original survey and that the same is correct and true to the original survey and that the same has been filed for record in the office of the County Clerk of Harris County, Texas, on this 15th day of June, 1935.

COUNTY OF TEXAS

I, **W. B. Miller**, Surveyor, do hereby certify that the above plat was prepared from the original survey and that the same is correct and true to the original survey and that the same has been filed for record in the office of the County Clerk of Harris County, Texas, on this 15th day of June, 1935.

COUNTY OF TEXAS

I, **W. B. Miller**, Surveyor, do hereby certify that the above plat was prepared from the original survey and that the same is correct and true to the original survey and that the same has been filed for record in the office of the County Clerk of Harris County, Texas, on this 15th day of June, 1935.

COUNTY OF TEXAS

I, **W. B. Miller**, Surveyor, do hereby certify that the above plat was prepared from the original survey and that the same is correct and true to the original survey and that the same has been filed for record in the office of the County Clerk of Harris County, Texas, on this 15th day of June, 1935.

COUNTY OF TEXAS

I, **W. B. Miller**, Surveyor, do hereby certify that the above plat was prepared from the original survey and that the same is correct and true to the original survey and that the same has been filed for record in the office of the County Clerk of Harris County, Texas, on this 15th day of June, 1935.

COUNTY OF TEXAS

I, **W. B. Miller**, Surveyor, do hereby certify that the above plat was prepared from the original survey and that the same is correct and true to the original survey and that the same has been filed for record in the office of the County Clerk of Harris County, Texas, on this 15th day of June, 1935.

See Page 69



*W. B. Miller*  
 Surveyor

Filed for record Oct. 3, 1935 at 11:10 o'clock A.M.  
 Recorded Nov. 19, 1935 at 12:30 o'clock A.M.  
 Witnessed, Clerk County Court, Harris County, Texas  
*W. B. Miller*  
 Surveyor

COUNTY OF TEXAS  
 COUNTY OF HARRIS  
 I, **W. B. Miller**, Surveyor, do hereby certify that the above plat was prepared from the original survey and that the same is correct and true to the original survey and that the same has been filed for record in the office of the County Clerk of Harris County, Texas, on this 15th day of June, 1935.

COUNTY OF TEXAS  
 COUNTY OF HARRIS  
 I, **W. B. Miller**, Surveyor, do hereby certify that the above plat was prepared from the original survey and that the same is correct and true to the original survey and that the same has been filed for record in the office of the County Clerk of Harris County, Texas, on this 15th day of June, 1935.

COUNTY OF TEXAS  
 COUNTY OF HARRIS  
 I, **W. B. Miller**, Surveyor, do hereby certify that the above plat was prepared from the original survey and that the same is correct and true to the original survey and that the same has been filed for record in the office of the County Clerk of Harris County, Texas, on this 15th day of June, 1935.

COUNTY OF TEXAS  
 COUNTY OF HARRIS  
 I, **W. B. Miller**, Surveyor, do hereby certify that the above plat was prepared from the original survey and that the same is correct and true to the original survey and that the same has been filed for record in the office of the County Clerk of Harris County, Texas, on this 15th day of June, 1935.

COUNTY OF TEXAS  
 COUNTY OF HARRIS  
 I, **W. B. Miller**, Surveyor, do hereby certify that the above plat was prepared from the original survey and that the same is correct and true to the original survey and that the same has been filed for record in the office of the County Clerk of Harris County, Texas, on this 15th day of June, 1935.

2366-A-11

70